



GAT MONTHLY MEMBERSHIP PROGRESS REPORT

Results as of: 5/31/2023

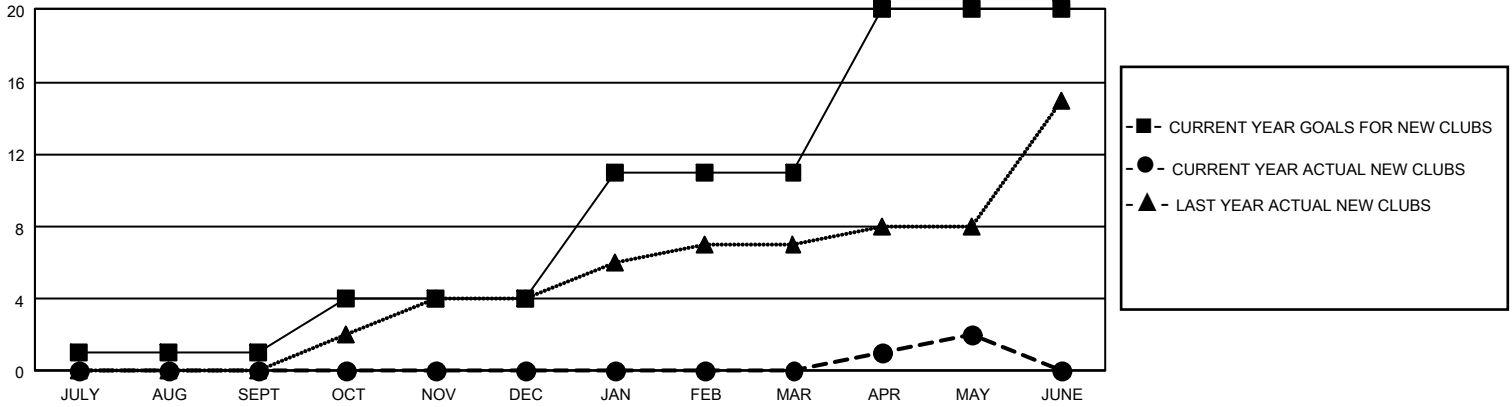
GMT Constitutional Area 3, Group H

REPORT DOES NOT INCLUDE CLUBS IN UNDISTRICTED AREAS.

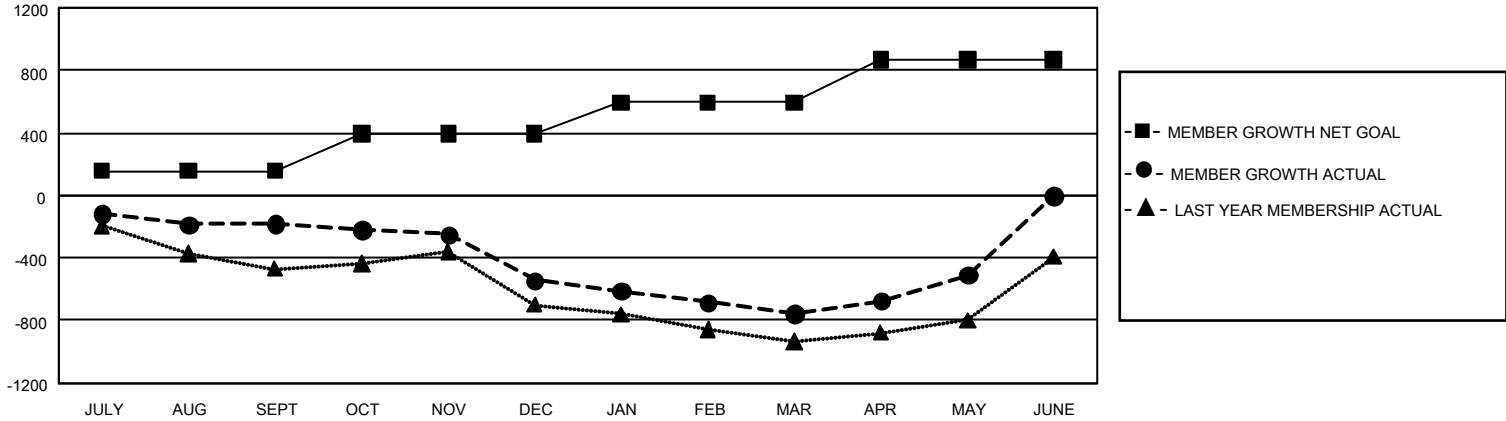
Clubs			
RESULTS FOR 2022-2023			
QUARTER	NEW CLUB GOAL	NEW CLUBS	DROPPED CLUBS
JULY/AUG/SEPT	3	0	2
OCT/NOV/DEC	9	0	5
JAN/FEB/MAR	21	0	5
APR/MAY/JUNE	27	2	0

Members			
RESULTS FOR 2022-2023			
QUARTER	MEMBER GROWTH NET GOAL	MEMBER GROWTH ACTUAL	DROPPED MEMBERS ACTUAL (including transfers)
JULY/AUG/SEPT	155	275	435
OCT/NOV/DEC	240	314	654
JAN/FEB/MAR	200	187	360
APR/MAY/JUNE	275	561	283

GOALS AND ACTUAL NEW CLUBS CUMULATIVE



GOALS AND ACTUAL MEMBERS CUMULATIVE



DROPPED CLUBS: 12	281 CLUBS OF 494 ADDED 1 OR MORE NEW MEMBERS	<u>GENDER DISTRIBUTION</u>	
<u>DROPPED MEMBERS</u>		MALE	7,079 (49.26%)
DECEASED	93	FEMALE	7,288 (50.71%)
CLUB CANCELLED	97	NON BINARY	1 (0.01%)
OTHER	1,541	PREFER NOT TO ANSWER	4 (0.03%)
TOTAL	1,731	TOTAL FAMILY UNIT MEMBERS	7,418
	CLICK HERE FOR CUMULATIVE MEMBERSHIP DATA	FAMILY MEMBERS PAYING HALF DUES	3,788